

Past Productions

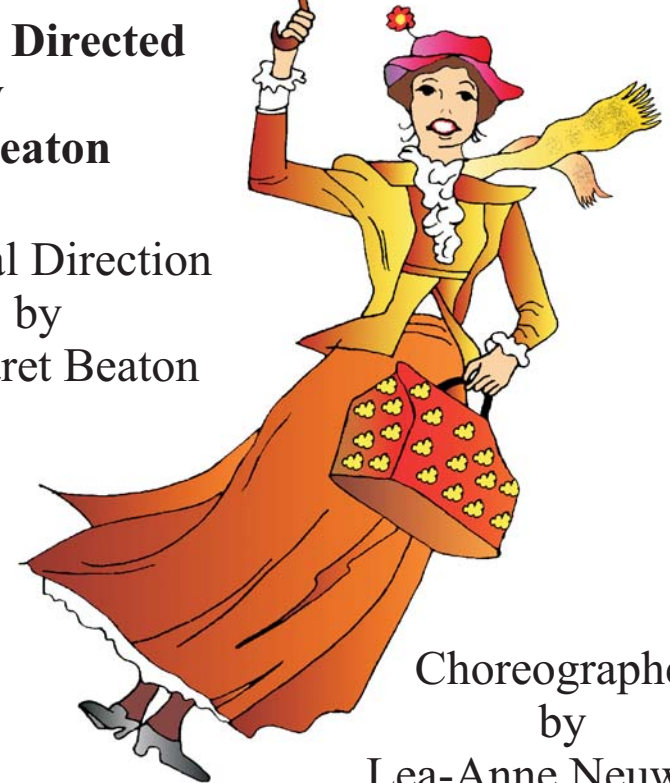
1972 The Bells of Bruges	
1973 The Wizard of Oz	
1974 Listen to the Wind	
1975 A Christmas Carol	I'll Get My Man
1976 Topsy Turvey Castle	Joseph and the Amazing Technicolour Dreamcoat
	The Big Band Show
1977 The Love Birds	The Wizard of Oz
1978 Animal Capers	Captain and his Floating Zoo
1979 West Side Story	Listen to the Wind
1980 The Best of Protea	Snow White and the Seven Dwarfs
1981 Peter Pan	Babes in Arms
1982 Alice in Wonderland	
Carols Come to Life	
1883 Protea Playtime '83	A Christmas Carol
1984 Half a Sixpence	The Wizard of Oz
1985 Seven Brides for Seven Brothers	Mini Pops
1986 CanCan	Tales of Beatrix Potter
1987 Buggy Malone	Prism
1988 The Adventures of Tom Sawyer	Finians Rainbow
1989 The Jungle Book	Bye Bye Blue Jeans
1990 Brigadoon	Pinocchio
1991 Dracula Spectacula	Mary Poppins
1992 Rockafella	Water Babies
1993 Annie Get Your Gun	Peter Pan
1994 A Funny Thing Happened On the way to the Forum	Three and a Half Musketeers
1995 West Side Story	
1996 Joseph and the Amazing Tehnicolor Dreamcoat	
1997 Leader of the Pack	Robin Hood
1998 Pinocchio	Sweeney Todd
1999 Cindy Ella	

Protea Stage Productions *presents*

Mary Poppins

Adapted & Directed
by
Doug Beaton

Musical Direction
by
Margaret Beaton



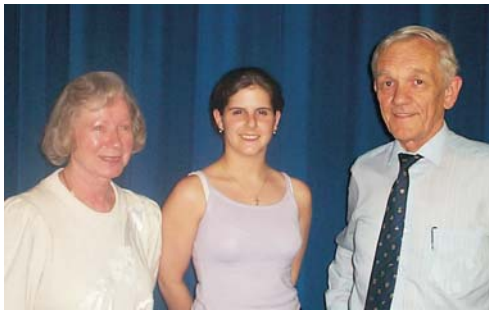
Choreographed
by
Lea-Anne Neuwerth

Benoni, 8-18 November 2000

About “Mary Poppins”

The year is 1910, and the middle-class Banks family have just employed yet another nanny for their two mischievous children, Jane and Michael. But what a nanny!

The mysterious Mary Poppins, with her extraordinary power to make the strangest things happen at the snap of her fingers, and her great friend Bert, the odd job man, delight the children, but drive Mr Banks up the wall. Only after a disastrous trip to the bank, which costs him his job does George Banks ‘see the light’. All ends well as he becomes yet another Mary Poppins ‘fan’.



Margaret Beaton, Lea-Anne Neuwerth, Doug Beaton

About the Production

There are five Mary Poppins books, by P. L. Travers, which were used as a basis for the famous Walt Disney film. Converting these to a stage show leads to certain technical problems, as much of the attraction of Mary Poppins lies in her magical powers. We have not been ambitious in this respect, keeping the *magic* simple but we hope effective. We treated the show as a very musical musical!

We added a chorus of street urchins, added some songs not associated with Mary Poppins and anyone who doesn't sing or hum some of the songs on the way home, must be made of stone.

Those who made it happen

Backstage manager	<i>Bob Stone</i>
Backstage crew	<i>Gerry Lane, Barry Neuwerth, Doug Beaton, Des Price, Dale Harper, Steven Harper</i>
Continuity	<i>Lynn Hotson, Elaine Cusdin</i>
Front of House	<i>Jane Stone, Bob Stone, Barry Neuwerth</i>
Makeup	<i>Lea-Anne Neuwerth, Elaine Cusdin, Claire Wilson</i>
Prompt	<i>Doug Beaton</i>
Lighting	<i>Graham Beneke, Andy Papastefanou, Alan Packman</i>
Spot light	<i>Graham Beneke</i>
Teas	<i>Caroline Havenga</i>
Sweets	<i>Alisoun Passmoor</i>
Bar	<i>2nd Benoni Committee</i>
Costumes	<i>Tracy Hardman, Caroline Havenga, Jane Stone</i>
Posters	<i>Barry Neuwerth</i>
Programme	<i>Barry Neuwerth</i>
Set Construction	<i>Bob Stone, Gerry Lane, Caroline Havenga, Barry Neuwerth, Lynn Hotson</i>
Backdrop Design	<i>Des Price</i>
Backdrop Painting	<i>Des Price, Bob Stone</i>
Banners	<i>Made by Scorpion Printers, Dunnottar</i>
Ramp	<i>Made by Ken Price of Claude Price Agencies</i>

Protea's Committee

Chairman	<i>Doug Beaton</i>	972-1060
Secretary	<i>Jane Stone</i>	734-3413
Treasurer	<i>Barry Neuwerth</i>	849-0640
Technical	<i>Bob Stone</i>	734-3413
Artistic	<i>Tracy Winkler</i>	
Publicity	<i>Bob Stone</i>	

Special thanks to Patrick and Anne Arentsen for making Arbour Primary's hall available for rehearsals. And to Sue Piron for making her Creche's hall available when Arbor was in use for school activities.

Car Security provided by the Salvation Army - Donations appreciated

Watch the press for our next production!



Banks Family



Constable & Ellen



Happy Holiday Flowers



Cook & Ellen



Cast of 'Mary Poppins'

Synopsis

Prologue - Streets of London - Overture

*"London is London", "London Bridge", "Lambeth Walk",
Maybe It's because I'm A Londoner - Chorus*

Act I - Bank's House at 17 Cherry Tree Lane & Streets of London

"Sister Suffragette" - Winifred Banks, Cook, Ellen & Katie Nanna

"The Life I Lead" - George Banks

"It's a Hard Knock Life" - The Street Urchins

"A British Nanny" - George Banks

"The Perfect Nanny" - Jane & Michael Banks

"The Streets of London" - Bert

"A Spoon Full of Sugar" - Mary Poppins

"Stay Awake" - Mary Poppins

Act II - Jolly Holiday Dream Sequence

"Jolly Holiday" - Bert & Chorus & Mary Poppins

"It's Mary that We Love" - Bert and Penguins and Flowers

"I Love to Laugh" - Cook and Everyone

"Strolling through the Park" - Ellen & P. C. Jones

"Picnics" / "Ice Cream" - Urchins

"Supercalifragilistic" - Mary Poppins & Everyone

INTERVAL

Act III - The Banks House, Fiduciary Bank & Streets of London

"A British Bank" - George Banks, Mary Poppins

"Feed the Birds" - Mary Poppins

"Every Time You're Good You Grow a Bit" - Urchins

"Fiduciary Bank" - Mr Dawes & George Banks

"Chim, Chim, Cheree" - Bert & Chorus

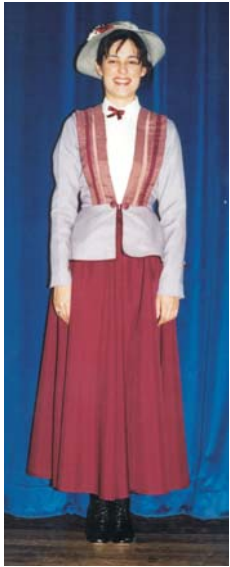
"Step in Time" - Everyone

"A Man Has His Dreams" - George Banks, Bert

"It's a fine life" - Urchins

"Let's Go Fly a Kite" - All

The Cast



Mary Poppins

<i>Mary Poppins</i>	The Magical Nanny	<i>Claire Wilson</i>
<i>Bert</i>	The 'Odd Job' Man	<i>Craig Allen</i>
<i>Jane</i>	The Bank's Daughter	<i>Jody Miles</i>
<i>Michael</i>	The Bank's Son	<i>Stephen Aiken</i>
<i>George Banks</i>	The Father	<i>Colin Genricks</i>
<i>Winifred Banks</i>	The 'Suffragette' Mother	<i>Anne Arentsen</i>
<i>Cook</i>	The Bank's Cook	<i>Tracie Robertson</i>
<i>Ellen</i>	The Bank's Maid	<i>Lynsay Stone</i>
<i>Katie Nanna</i>	Nanny	<i>Kirsty Goode</i>
<i>Police Constable</i>	London Bobby	<i>Peter Stone</i>
<i>Miss Dawes</i>	Fiduciary Bank Director	<i>Kirsty Goode</i>
<i>Mr Dawes</i>	Fiduciary Bank Chairman	<i>Hilton Miles</i>
<i>Mr Tomes</i>	Fiduciary Bank Director	<i>Adrian Murrell</i>
<i>Flower Seller</i>		<i>Tamar Francis</i>
<i>Street Vendor, Eels</i>		<i>Craig Groenewald</i>
<i>Street Vendor, Hot Chestnuts</i>		<i>Donovan Arentsen</i>
<i>Magic Chest of Draws</i>		<i>David Selkirk</i>
<i>Jack in Box</i>		<i>Shanna Miles</i>
<i>Letter Blocks</i>	<i>Glenn, Graeme, Michael and Bryce</i>	
<i>Flowers</i>	<i>Rachelle, Tanya and Tahnee</i>	



Bert



The Urchins

- Harry - Richard Arentsen*
- Billy - Glenn Groenewald*
- Tom - Craig Groenewald*
- Syd - Graeme Packman*
- Andrew - Colin Groenewald*
- Bob - Michael Chambers*
- Betty - Rachelle White*
- Jeanie - Shanna Miles*
- Mary - Lauren Arentsen*
- Bonnie - Pamela de Vos*
- Michael Cusdin*
- Bryce van der Laar*
- Tanya Winkler*
- Tamar Francis*
- Tahnee Poultron*
- Bryan Klobbie*

Fiduciary Bank Clerks

- David Selkirk*
- Dale Goodwin*
- Donovan Arentsen*



Penguins

- Kirsty Goode*
- Tamar Francis*
- Lauren Arentsen*
- Nicola Clare*
- Pamela de Vos*

London Cockneys

- Nicola Clare*
- Dale Goodwin*
- David Selkirk*
- Donovan Arentsen*
- Adrian Murrell*
- Hilton Miles*



Fiduciary Bank Staff